

EVERHOT HOT WATER UNITS

The warmest way to start your day.



everhot®
hot water units

When it comes to performance, Everhot is famous for delivering plenty of hot water along with years of reliable service. That's why so many Australian families choose our systems.

Of course, not all hot water units are created equal. Some are better for the environment than others. You'll be happy to know that all Everhot solar systems and heat pumps come with a full five star energy rating. In some states of Australia, you may even be eligible for rebates and renewable energy certificates on these units, reducing the overall cost.

So when you're making your buying decision, always consider the ongoing energy costs, not just the initial purchase price. While some units are more expensive than others, they will often save you money in the long run. And the environment will thank you for it.

Everhot. The warmest way to start your day.

Contents

Gas Boosted Solar	2-3
Heat Pumps	4-5
5 Star Gas Storage	6
Continuous Flow	7
3 Star Gas Storage	8
Electric Storage	9



Reece Product Quality Guarantee
All products enjoy a product replacement warranty.
For full warranty details visit
www.reece.com.au/productquality

Gas Boosted Solar

Everhot Gas Boosted Solar systems use the sun's energy to heat water, so they are much better for the environment.

We have an Everhot Gas Boosted Solar unit for everyone around the country, no matter where you live.

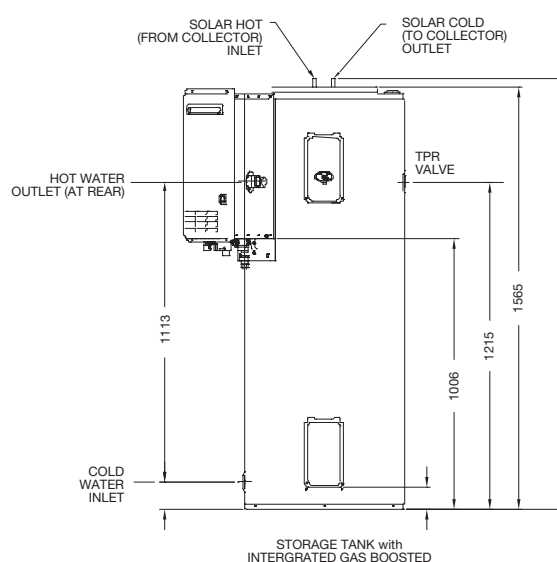
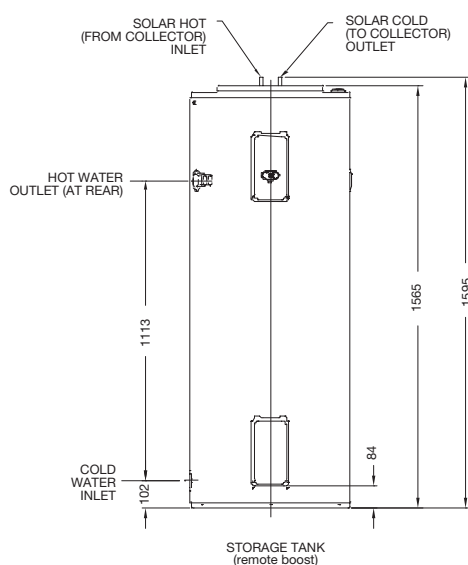
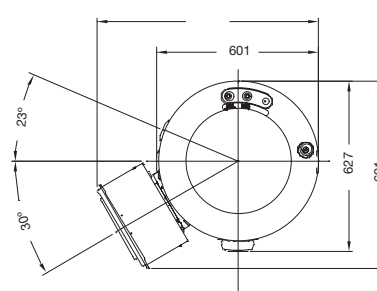
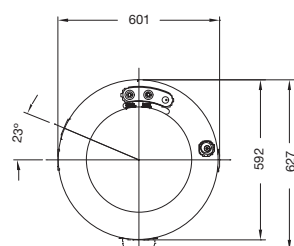


Product Features

- Enhanced Frost Protection – unique “powered” frost protection system using electronic controls to prevent frost damage if tank water temperature falls below 8-12°C
- Continuous Flow Gas Boosted Solar – enjoy endless, efficient hot water from the standard 20L/min gas booster or upgrade to a 26L.
- Energy Efficient – with the total tank capacity available for solar heating and 5 star gas boosting, energy consumption can be reduced by over 60% (in Zone 4)
- High Efficiency Solar Collectors – 2 selective surface collectors to efficiently absorb energy from the sun
- Eligible for STC and State Government Rebates. Conditions apply.

specifications

Tank Storage Volume	220 litres			
Plumbing	Left handed			
Gas Booster	20L/min Base, 26L/min Upgrade			
	Solar Storage Tank	CF Booster		Collectors –each (HBT)
		20L	26L	
Height	1565mm	520mm	647mm	1937mm
Width (without booster)	601mm	350mm	350mm	1022mm
Depth	627mm	160mm	210mm	65mm
Weight (empty)	77kg	17kg	21kg	36kg
Warranty	10 Year Warranty – heat exchanger 7 year cylinder 5 year solar collectors 3 year labour on cylinder & heat exchanger 1 year parts including labour on domestic installations only			



RECs zone map

For more information on Small-Scale Technology Certificates (STC's) visit: www.orcr.gov.au or www.reece.com.au



Heat Pumps

Everhot Heat Pumps deliver the very latest technology at an affordable price. As one of the most efficient hot water systems, they are a more environmentally friendly alternative to straight Gas and Electric storage systems.



7 YEAR WARRANTY



HEAT PUMP



7 YEAR WARRANTY



HEAT PUMP



**Everhot 310
Integrated**

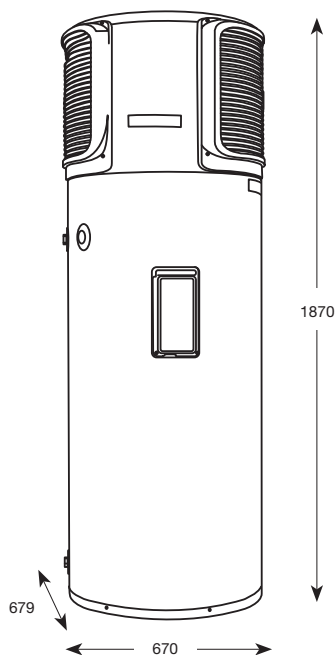


**Everhot 270L, 325L and
410L Split Systems**

Everhot 310 Integrated

- Heats water to 60°C, which is available for immediate use.
- Ground mounted installation (No solar panels)
- Two piece, site integrated design

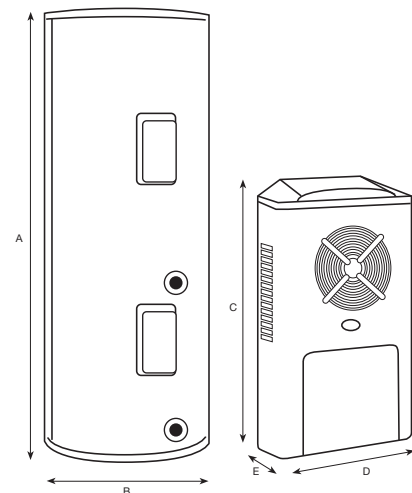
specifications	
Tank capacity	310 L
Configuration	Integrated
Number of People	3 to 6
Power Input	1300 W
Heating Rate 1	71 L/hr
Refrigerant	R134a
Booster Capacity	220 L
Weight - Module	48 kg
Weight - Tank	87 kg
Total Weight	135 kg
Warranty	7 year cylinder 3 years labour 2 years on sealed system inc labour 1 year on all other parts and labour



Everhot 270L, 325L & 410L Split System

- Ground mounted installation (No solar panels)
- Split design, allows the tank & heat pump module to be installed up to 4m's apart

specifications		* available in QLD and NTH NSW only		
		325	270	410
Tank capacity		325 L	270 L	410 L
Configuration		Split	Split	Split
Number of People		2 to 5	2 to 4	2 to 6
Power Input		800 W	800 W	800 W
Refrigerant		R134a	R134a	R134a
Booster Capacity		180 L	180 L	200 L
Weight - Module		50 kg	46 kg	50 kg
Weight - Tank		88 kg	71 kg	118 kg
Total Weight		138 kg	117 kg	168 kg
Warranty		7 year cylinder 3 years labour 2 years on sealed system inc labour 1 year on all other parts and labour		



Dimensions - Tank				
	270	325	410	
Height (A)	1382mm	1637mm	1835mm	
Diameter / Width (B)	640mm	676mm	685mm	
Dimensions - Module				
Height (C)	1034mm	1034mm	1034mm	
Diameter / Width (D)	575mm	575mm	575mm	
Depth (E)	332mm	332mm	332mm	



RECs zone map

For more information on Small-Scale Technology Certificates (STC's) visit: www.orcr.gov.au or www.reece.com.au

5 Star Gas Storage

Holding one of the highest energy efficiency star ratings for Gas Storage, the Everhot 5 star units not only help save the environment, they'll also save you money.



7 YEAR WARRANTY



5 STAR ENERGY EFFICIENCY



GAS

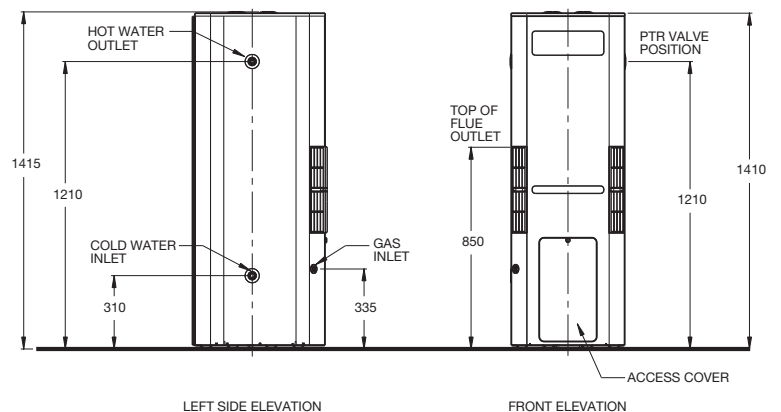
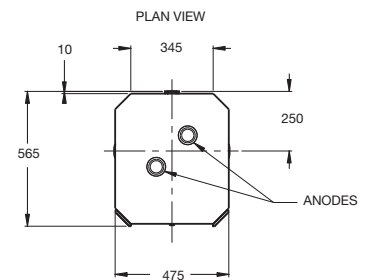


Everhot 270

- Full Mains pressure at multiple taps
- Natural and Propane gas models
- 5 star energy rating
- Compact design

specifications

Gas Type	NG	Propane
AGA Energy Rating	5 stars	5 stars
Number of People	2 to 4	2 to 4
Cool Climate (No. of People)	2 to 3	2 to 3
Storage Capacity (litres)	135	135
Installation	External	
Recovery Rate @ 45°C (L/hr)	135	135
First Hour Capacity (litres)	270	270
Hourly gas consumption (MJ)	30	30
Weight (empty)	65	65
Max. Water Supply Pressure kPa (With ECV)	960	960
Max. Water Supply Pressure kPa (Without ECV)	1100	1100
Cold Water Connection	R ¾ / 20	R ¾ / 20
Gas Connection	G 1/2 / 15 Cn (flared compression)	
Warranty	7 year cylinder 1 yr parts and labour	



Continuous Flow

Everhot Continuous Flow hot water units offer you all the pleasure of endless hot water in a compact, space saving design. With 5 star energy ratings, you can be rest assured you'll be doing your bit for the environment while keeping your gas bills low.



10 YEAR WARRANTY



5.1 STAR ENERGY EFFICIENCY

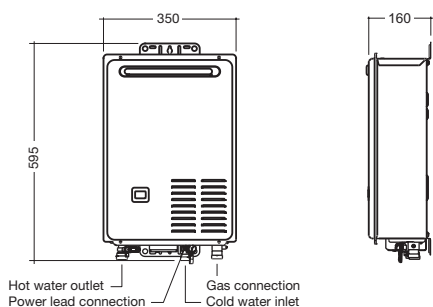


CONTINUOUS FLOW

Everhot 20

- Never runs out of hot water
- 5.1 star energy rating
- Compact, space saving design
- 10 year warranty on heat exchanger
- Controllers available

specifications	
Flow Rate @ 25°C Temp Rise	20L/min
Thermal Input	153 MJ/H
Number of People	3 to 4
Cabinet Dimensions	Height 520 mm Width 350 mm Depth 160 mm Overall Height 595 mm
Approx. Weight	15 kg Empty
Max. Water Supply Pressure	1000 kPa
Min. Water Supply Pressure	140 kPa
Min. Operating Flow Rate	2.7 L/min
Cold Water Connection	R 3/4 / 20
Hot Water Connection	R 3/4 / 20
Gas Connection	R 3/4 / 20
AGA Energy Rating	5.1 stars
Recess Box Code	1305314
Kitchen Temp. Controller Code	1300915
Bathroom 1 Temp. Controller Code	1300916
Bathroom 2 Temp. Controller Code	1300917
Warranty	10 year Heat Exchanger, 3 years parts and labour for domestic (non-commercial) installations only



10 YEAR WARRANTY



5.2 STAR ENERGY EFFICIENCY

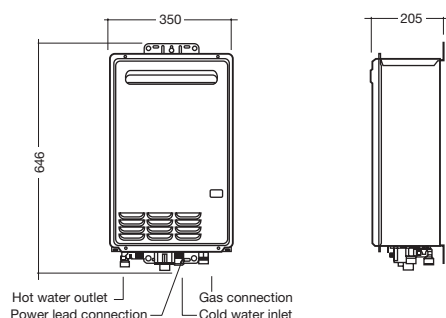


CONTINUOUS FLOW

Everhot 26

- Never runs out of hot water
- 5.2 star energy rating
- Compact, space saving design
- 10 year warranty on heat exchanger
- Controllers available

specifications	
Flow Rate @ 25°C Temp Rise	26L/min
Thermal Input	199 MJ/H
Number of People	4 to 6
Cabinet Dimensions	Height 565 mm Width 350 mm Depth 205 mm Overall Height 646 mm
Approx. Weight	21 kg Empty
Max. Water Supply Pressure	1000 kPa
Min. Water Supply Pressure	140 kPa
Min. Operating Flow Rate	2.7 L/min
Cold Water Connection	R 3/4 / 20
Hot Water Connection	R 3/4 / 20
Gas Connection	R 3/4 / 20
AGA Energy Rating	5.2 stars
Recess Box Code	1305314
Kitchen Temp. Controller Code	1300915
Bathroom 1 Temp. Controller Code	1300916
Bathroom 2 Temp. Controller Code	1300917
Warranty	10 year Heat Exchanger, 3 years parts and labour for domestic (non-commercial) installations only



3 Star Gas Storage

With low upfront costs, these Gas Storage systems are ideal replacement units. They store heated water at a constant temperature in an insulated tank, ready for use. The water is reheated by a Gas flame when the temperature falls below the thermostat setting.



7 YEAR WARRANTY



3 STAR ENERGY EFFICIENCY



GAS

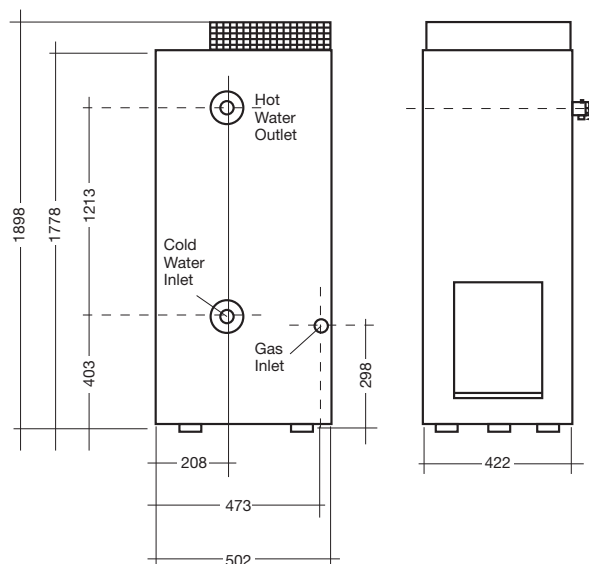


Everhot 320

- Fast recovery
- 3 star energy rating
- Thermostat control
- Mains pressure unit

specifications	
Storage Capacity	160 L
Recovery Rate	160 L/hr @ 45°C rise
Number of People	3 to 5
1 st Hour Capacity	320 L*
Hourly Gas Cons.	40 MJ/hr
AGA Energy Rating	3 stars
Dimensions	Height 1898 mm Width 422 mm Depth 502 mm
Approx. Weight	79 kg Empty
Relief Valve Setting	1400 kPa
Max. Supply Pressure	with ECV# 960 kPa without ECV# 1120 kPa (ECV# not supplied with water heater)
Water Connection	(LHS) RP ¾ / 20
Gas Connection	RP ½ / 15
Warranty	7 years on cylinder, 3 years labour and 1 year components

* First hour capacity is the storage capacity plus nominal first hour recovery rate @ 45°C temperature rise using natural gas.



Electric Storage

In Electric Storage hot water units, water is heated in an insulated tank by an electric element, like a giant kettle. The Everhot 315 electric is the warmest way to start the day. With its huge 315 litre capacity, you can now enjoy hours of showers. The unit has a 8 year warranty.



7 YEAR WARRANTY



3 STAR ENERGY
EFFICIENCY



ELECTRIC

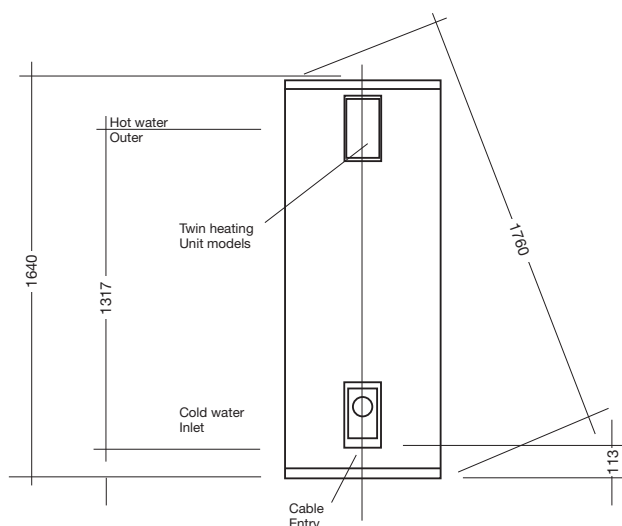


Everhot 315

- 8 year warranty on cylinder
- Mains pressure unit
- Initial capacity of 324 litres

specifications	
Hot Water Delivery Rating	315 L
Initial Storage Capacity	324 L
Dimensions	Height 1640 mm Width 640 mm Depth 680 mm
Approx. Weight	87 kg Empty
Inlet/Outlet Connections	RP ¾ / 20
Relief Valve Setting	1000 kPa
Expansion Control Valve (ECV)** Setting	850 kPa
Max. Supply Pressure	without ECV 800 kPa with ECV 680 kPa
Suitable for No. of People	
Continuous Tariff	4 - 6
Off Peak Tariff	2 - 4
Element Ratings	(Single Element) 3.6 kW and 4.8 kW
Warranty	8 years on cylinder, 3 years labour and 1 year components

** Expansion Control Valve not supplied with the water heater.



Don't risk it, use a licensed plumber.™

Once you have chosen your new hot water system you will need a professional to install it for you. Always use a licensed plumber and electrician and ensure that your system is serviced to manufacturer instructions.

Reece. Works for you.™

Call 1800 032 566 or visit www.reece.com.au for your nearest Reece branch.

Due to limitations in the printing process the colours in this brochure are a guide only.

All products enjoy a product replacement warranty. For full warranty details visit www.reece.com.au/productquality

V4 [BROCHURE CODE: 2130177]

everhot®

reece™